



altofina™




Welcome to a true world
of **colour**. **Altofina** offers
great design, a perfect
finish and high quality
service, all at a price that
comes within budget.


Take a look at the Altofina laminate collection. Innovative materials, décors and surface textures have been introduced to mingle with mainstream decorative laminate designs. This balanced collection is available for you to create interior spaces that look wonderful, but are also commercially affordable.



altofina™



A collection of
114 stunning décors
and textures.



Altofina Blue 012 specified for the wall behind the receptionist.
Altofina Marble 005 specified for the reception desk and counter.

Décor Ranges

The Altofina collection encompasses 6 distinct décor ranges which are described below. These décor ranges provide a comprehensive choice of visual designs, authentic textures and physical performance characteristics.



altofina

Plain Colour

Add a splash

A range of 57 plain colours which in particular features popular neutral colours but also has several vibrant spectrum colours.



altofina

Solid Colour

Colour all the way through

A range of 6 plain colours that are not just skin deep! The colour is seen throughout the thickness of each décor, enabling fabricators to create laminate products with edges that appear seamless.



altofina

Pure Finish

A touch of class

A range of 7 plain colours that have a remarkable surface finish that feels like a perfect blend of silk and porcelain.



altofina

Wood

Go with the grain

22 wood effect décors with a variety of authentic textures to perfectly complement each décor.



altofina

Stone

Imitation saves the world!

This range of 11 décors successfully imitates the beautiful world of geology without the environmentally damaging process of mining precious stones.



altofina

Metal

Armour plated design

11 metallic décors created with real metal foil on the surface, whilst providing all the practical benefits of laminate beneath the surface.

Quality

Altofina high pressure laminates fully comply with the requirements of BS EN 438, NEMA LD3, ISO 4586 parts 1 and 2, including abrasion, impact, moisture resistance, postformability, tensile strength, safety of installation and ease of maintenance. All Gloss finish décors and Solid Colour, Pure Finish and Metal ranges have a protective foil to reduce the risk of scratching during fabrication and installation. In addition, a protective foil is applied on all textured Plain Colours with an LRV value of 30 or less. The foil can be easily removed either before or after the installation is complete.

Fabrication

Altofina can be bonded to various grades and thicknesses of chipboard, MDF, metal, mineral, lightweight honeycomb and other substrates to create a rigid panel. The majority of Altofina ranges are available in postforming grade, allowing both flat and curved applications for projects that need seamless shapes.

All fabrication of Altofina laminates must be carried out by a fully trained and correctly equipped fabricator.

The Environment

Altofina is manufactured using environmentally sound production techniques. The complete Altofina Collection has achieved the FSC mixed accreditation. The UK and Ireland distributor of Altofina is Blackheath Products Ltd, who is an accredited FSC chain of custody supplier. The Altofina Wood range achieves the look and feel of real timber, thereby avoiding the need to cut down rare and exotic species. The Altofina Stone range deliberately imitates popular natural stones and concrete finishes without the need to engage in environmentally damaging mining processes.

Performance Grades

All décors are available in postforming grade, with the exception of the Pure Finish and Solid Colour ranges which are both available in standard grade. Brushed Metal 001, 002 and 003 are also available in postforming grade, but all other Metal décors are available in standard grade.

For full details, please refer to the availability charts at the rear of this brochure.

Dimensions

All décors are available as either 3050 x 1300mm or 3080 x 1250mm. Black 001 and 002 and White 001 and 002 are also available as 3660 x 1525mm and 2510 x 1250mm.

For full details, please refer to the availability charts at the rear of this brochure.



| Altofina Concrete 006 specified for the table tops.

Sample Service

We can send you larger laminate samples of all of the décors you are interested in.

High resolution décor images with 1:1 close up views and 1:20 full sheet views of each décor can be seen and downloaded from our website.

Please contact us to order samples:

Tel: 0121 561 4245

Email: sales@altofina.co.uk

Distribution Partner

Blackheath Products Ltd distributes Altofina laminates throughout the UK and Ireland.

Please contact Blackheath Products Ltd at:

Units 1-4 Fairfield Park, Halesowen,
West Midlands B62 9JL

Tel: 0121 561 4245

Email: sales@blackheathproducts.co.uk

www.blackheathproducts.co.uk





Plain Colour

Add a splash of colour to your room, from vivid spectrum to calm neutral, our 0.7mm thickness plain colours will give you vast expanses of perfectly level, solid and consistent colour. All of these plain colours are available as postforming grade laminate

Non standard POA

White 001

Satin | FSC
3080mm x 1250mm | 2510mm x 1250mm
3660mm x 1525mm

Standard

White 002

Gloss | Protective Foil | FSC
3080mm x 1250mm | 2510mm x 1250mm
3660mm x 1525mm

Non standard POA

White 004

Satin | FSC
3080mm x 1250mm

Non standard POA

White 003

Matt | FSC
3080mm x 1250mm

Non standard POA

White 006

Satin | FSC
3080mm x 1250mm

Non standard POA

White 009

Satin | FSC
3050mm x 1300mm

Non standard POA

Cream 006

Satin | FSC
3080mm x 1250mm

Standard

Cream 005

Gloss | Protective Foil | FSC
3080mm x 1250mm

Non standard POA

Grey 007

Satin | FSC
3080mm x 1250mm

Non standard POA

Grey 022

Satin | FSC
3080mm x 1250mm

Non standard POA

Brown 004

Satin | FSC
3050mm x 1300mm

Non standard POA

Grey 028

Satin | FSC
3050mm x 1300mm

Non standard POA

Brown 006

Satin | FSC
3050mm x 1300mm

Non standard POA

Brown 005

Satin | Protective Foil | FSC
3050mm x 1300mm

Standard

Terracotta 001

Satin | Protective Foil | FSC
3080mm x 1250mm

Non standard POA

Grey 026

Satin | FSC
3050mm x 1300mm

Non standard POA

Grey 029

Satin | FSC
3080mm x 1250mm

Non standard POA

Grey 025

Satin | FSC
3080mm x 1250mm

Non standard POA

Grey 024

Satin | FSC
3050mm x 1300mm

Non standard POA

Grey 018

Satin | FSC
3050mm x 1300mm

Standard

Grey 033

Gloss | Protective Foil | FSC
3080mm x 1250mm

Non standard POA

Grey 001

Satin | FSC
3080mm x 1250mm

Non standard POA

Grey 027

Satin | FSC
3050mm x 1300mm

Non standard POA

Grey 017

Satin | FSC
3050mm x 1300mm

Non standard POA

Grey 023

Satin | FSC
3080mm x 1250mm

Non standard POA

Grey 034

Gloss | Protective Foil | FSC
3080mm x 1250mm

Non standard POA

Grey 016

Satin | Protective Foil | FSC
3050mm x 1300mm

Non standard POA

Grey 019

Satin | Protective Foil | FSC
3050mm x 1300mm

Non standard POA

Grey 012

Satin | Protective Foil | FSC
3080mm x 1250mm

Standard

Grey 035

Gloss | Protective Foil | FSC
3080mm x 1250mm

Non standard POA

Grey 036

Gloss | Protective Foil | FSC
3080mm x 1250mm

Non standard POA

Grey 032

Satin | Protective Foil | FSC
3050mm x 1300mm

Non standard POA

Grey 004

Satin | Protective Foil | FSC
3080mm x 1250mm

Non standard POA

Grey 021

Satin | Protective Foil | FSC
3050mm x 1300mm

Non standard POA

Grey 031

Satin | Protective Foil | FSC
3050mm x 1300mm

Non standard POA

Black 001

Satin | Protective Foil | FSC
3080mm x 1250mm | 2510mm x 1250mm
3660mm x 1525mm

Non standard POA

Black 003

Matt | Protective Foil | FSC
3080mm x 1250mm

Standard

Black 002

Gloss | Protective Foil | FSC
3080mm x 1250mm | 2510mm x 1250mm
3660mm x 1525mm

Standard

Blue 012

Satin | FSC
3050mm x 1300mm

Non standard POA

Blue 007

Satin | FSC
3080mm x 1250mm

Non standard POA

Blue 011

Satin | FSC
3050mm x 1300mm

Non standard POA

Blue 001

Satin | Protective Foil | FSC
3080mm x 1250mm

Non standard POA

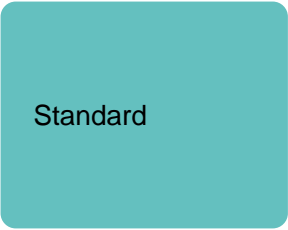
Blue 015

Satin | Protective Foil | FSC
3050mm x 1300mm

Standard

Green 013

Satin | FSC
3050mm x 1300mm



Blue 014

Satin | FSC
3050mm x 1300mm



Blue 013

Satin | Protective Foil | FSC
3050mm x 1300mm



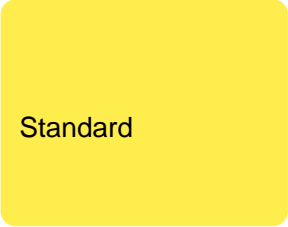
Green 012

Satin | Protective Foil | FSC
3050mm x 1300mm



Green 015

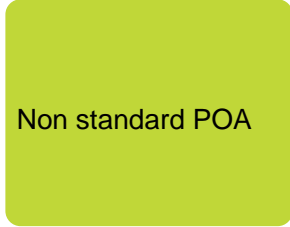
Satin | Protective Foil | FSC
3050mm x 1300mm



Standard

Yellow 004

Satin | FSC
3050mm x 1300mm



Non standard POA

Green 006

Satin | FSC
3080mm x 1250mm



Non standard POA

Green 009

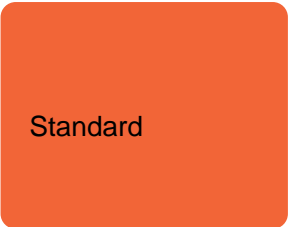
Satin | FSC
3080mm x 1250mm



Non standard POA

Green 014

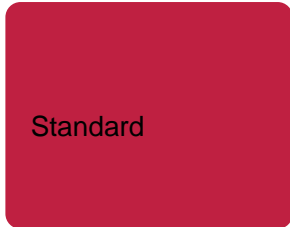
Satin | FSC
3080mm x 1250mm



Standard

Orange 002

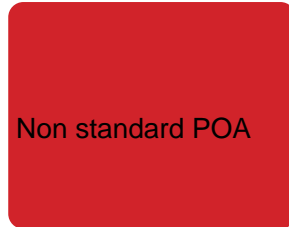
Satin | Protective Foil | FSC
3050mm x 1300mm



Standard

Red 001

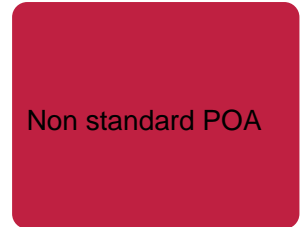
Satin | Protective Foil | FSC
3080mm x 1250mm



Non standard POA

Red 004

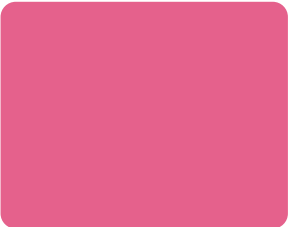
Satin | Protective Foil | FSC
3050mm x 1300mm



Non standard POA

Red 003

Gloss | Protective Foil | FSC
3080mm x 1250mm



Pink 003

Satin | Protective Foil | FSC
3080mm x 1250mm

altofina

Solid Colour

These 1mm thickness standard grade Solid Colours are not just skin deep! The plain colour appears throughout the thickness of each Solid Colour décor. This helps to create a seamless look to any furniture or construction object clad in Solid Colour.

POA

White SC1

Satin | Protective Foil | FSC
3050mm x 1300mm

POA

White SC3

Gloss | Protective Foil | FSC
3050mm x 1300mm

POA

White SC2

Satin | Protective Foil | FSC
3050mm x 1300mm

POA

White SC4

Gloss | Protective Foil | FSC
3050mm x 1300mm

Black SC1

Satin | Protective Foil | FSC
3050mm x 1300mm

Black SC2

Gloss | Protective Foil | FSC
3050mm x 1300mm

altofina

Pure Finish

This range of 0.9mm thickness standard grade Pure Finish plain colours have a remarkable surface finish that feels like a perfect blend of silk and porcelain.

POA

White PF1

Pure Finish | Protective Foil | FSC
3050mm x 1300mm

POA

White PF2

Pure Finish | Protective Foil | FSC
3050mm x 1300mm

POA

Grey PF1

Pure Finish | Protective Foil | FSC
3050mm x 1300mm

POA

Grey PF2

Pure Finish | Protective Foil | FSC
3050mm x 1300mm

POA

Grey PF3

Pure Finish | Protective Foil | FSC
3050mm x 1300mm

POA

Grey PF4

Pure Finish | Protective Foil | FSC
3050mm x 1300mm

POA

Black PF1

Pure Finish | Protective Foil | FSC
3050mm x 1300mm

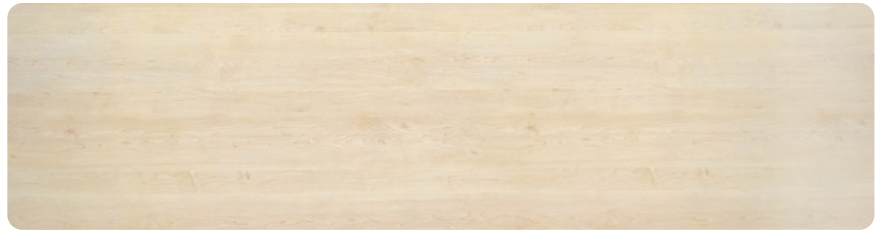


Wood

Go with the grain with these 0.7mm thickness postformable Wood effects. Each texture has been carefully selected to sympathetically correspond with the natural grain of each species, bringing a realistic depth and character.



Birch 001
Satin | FSC
3050mm x 1300mm
Non standard + £300



Maple 002
Satin | FSC
3050mm x 1300mm
Non standard + £300



Ash 003
Satin | FSC
3050mm x 1300mm
Non standard + £300



Oak 007
Satin | FSC
3050mm x 1300mm
Standard



Cherry 005
Satin | FSC
3050mm x 1300mm
Standard





Beech 004
Satin | FSC
3050mm x 1300mm

Non standard + £300



Oak 005
Satin | FSC
3050mm x 1300mm

Standard



Oak 010
Satin | FSC
3050mm x 1300mm

Non standard + £300



Oak 012
Str 2 | FSC
3050mm x 1300mm

Non standard + £300



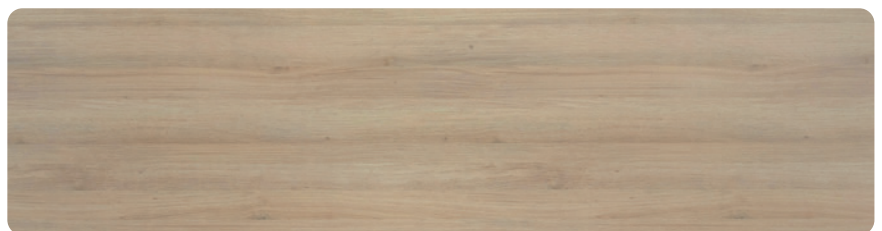
Oak 011
Satin | FSC
3050mm x 1300mm

Non standard + £300



Oak 009
Satin | FSC
3050mm x 1300mm

Non standard + £300





Oak 013
Satin | FSC
3050mm x 1300mm

Non standard + £300



Oak 014
Str 2 | FSC
3050mm x 1300mm

Non standard + £300



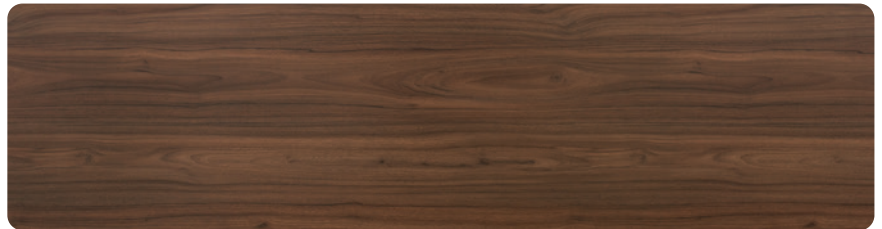
Plum 002
Gloss | Protective Foil | FSC
3080mm x 1250mm

Non standard + £300



Walnut 011
Satin | FSC
3050mm x 1300mm

Standard



Oak 015
Satin | FSC
3050mm x 1300mm

Non standard + £300



Walnut 013
Satin | FSC
3050mm x 1300mm

Non standard + £300





Oak 017
Satin | FSC
3050mm x 1300mm

Non standard + £300



Oak 016
Satin | FSC
3050mm x 1300mm

Non standard + £300



Zebrano 004
Satin | FSC
3050mm x 1300mm

Standard



Zebrano 005
Satin | FSC
3050mm x 1300mm

Standard



Striped Woodmix 001
Satin | Protective Foil | FSC
3080mm x 1250mm

Non standard + £300



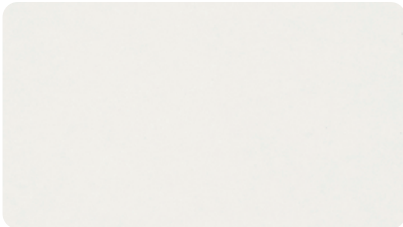


Stone

Laminate imitates geology. Marble, granite, oxidised stone and concrete have all been given a new lease of life with these superb 0.7mm postformable simulations of the real thing.



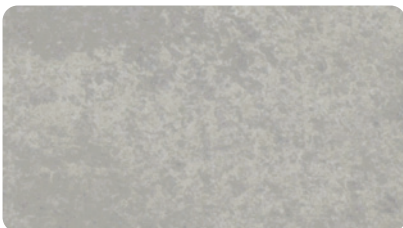
Marble 002
Matt | FSC
3050mm x 1300mm
Non standard + £300



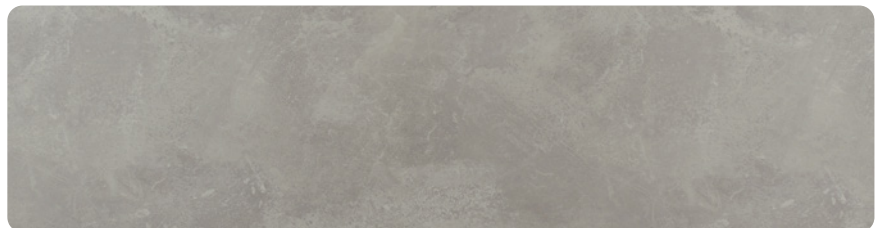
Marble 001
Gloss | Protective Foil | FSC
3050mm x 1300mm
Non standard + £400



Marble 003
Matt | FSC
3050mm x 1300mm
Non standard + £400



Concrete 002
Stone | FSC
3080mm x 1250mm
Non standard + £400



Concrete 003
Str 2 | FSC
3050mm x 1300mm
Non standard + £300





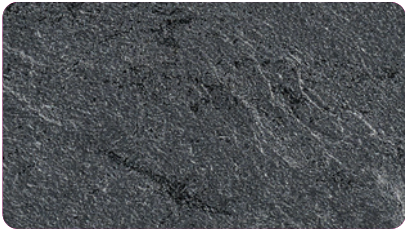
Marble 005
Matt | FSC
3050mm x 1300mm

Non standard + £300



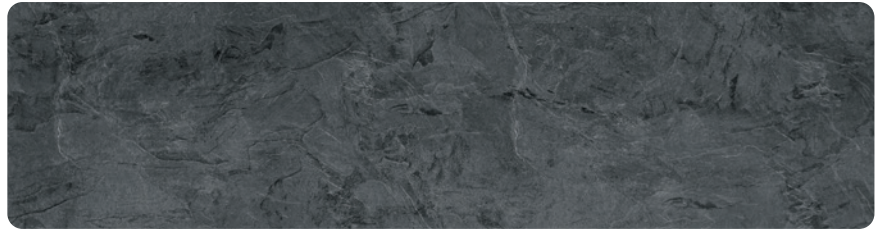
Concrete 006
Satin | FSC
3050mm x 1300mm

Non standard + £400



Stone 002
Stone | FSC
3050mm x 1300mm

Non standard + £300



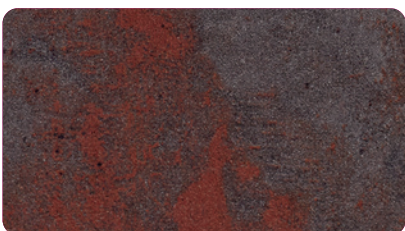
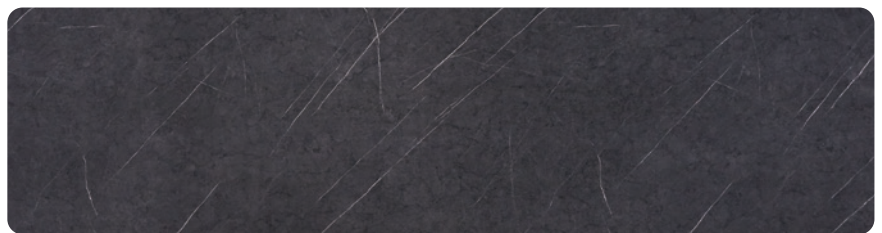
Concrete 007
Satin | FSC
3050mm x 1300mm

Non standard + £400



Marble 004
Satin | FSC
3050mm x 1300mm

Non standard + £400



Stone 001
Satin | FSC
3050mm x 1300mm

Non standard + £400



Armour plated décors. By using a surface layer of anodized aluminium foil for the Aluminium, Steel, Pewter, Bronze, Gold and Copper décors, Altofina gives you the fantastic look and feel of real metal with the practical advantages of standard grade laminate. Brushed Metal 001, 002 and 003 are all simulations of real metal, but have the advantage of being postformable.

Non standard + £400

Brushed Metal 001

Satin | FSC
3050mm x 1300mm

Non standard + £400

Brushed Metal 002

Satin | FSC
3050mm x 1300mm

Non standard + £400

Brushed Metal 003

Satin | Protective Foil | FSC
3050mm x 1300mm

Non standard + £400

Aluminium 001

Brushed | Protective Foil | FSC
3080mm x 1250mm

Non standard + £400

Aluminium 002

Brushed | Protective Foil | FSC
3080mm x 1250mm

Non standard + £400

Steel 001

Brushed | Protective Foil | FSC
3080mm x 1250mm

Non standard + £400

Pewter 001

Polished | Protective Foil | FSC
3080mm x 1250mm

POA

Bronze 001

Brushed | Protective Foil | FSC
3080mm x 1250mm

POA

Gold 002

Polished | Protective Foil | FSC
3080mm x 1250mm

POA

Gold 001

Brushed | Protective Foil | FSC
3050mm x 1300mm

POA

Copper 001

Brushed | Protective Foil | FSC
3050mm x 1300mm

Availability

Name	Texture	Postforming Grade	Standard Grade	Sizes Available	FSC Certified	Protective Foil	LRV	NCS (Nearest)	RAL (Nearest)	BS (Nearest)		
				3050mm x 1300mm	3080mm x 1250mm	2510mm x 1250mm	3660mm x 1525mm					
Plain Colour												
Black 001	Satin	Yes		■	■	■	Yes	Yes	4	9000-N	9011	00E53
Black 002	Gloss	Yes		■	■	■	Yes	Yes	4	9000-N	9011	00E53
Black 003	Matt	Yes		■			Yes	Yes	4	9000-N	9011	00E53
Blue 001	Satin	Yes		■			Yes	Yes	10	4050-R80B	5002	20D44
Blue 007	Satin	Yes		■			Yes		33	2040-R80B	5023	
Blue 011	Satin	Yes		■			Yes		30	2050-B10G		
Blue 012	Satin	Yes		■			Yes		54	1030-B		
Blue 013	Satin	Yes		■			Yes	Yes	24	2020-B		
Blue 014	Satin	Yes		■			Yes		41	2030-B40G		
Blue 015	Satin	Yes		■			Yes	Yes	11	6020-R80B		
Brown 004	Satin	Yes		■			Yes		54	2005-Y60		
Brown 005	Satin	Yes		■			Yes	Yes	25	5005-Y20R		
Brown 006	Satin	Yes		■			Yes		40	3005-Y50R		
Cream 005	Gloss	Yes		■			Yes	Yes	71	1005-Y20R		
Cream 006	Satin	Yes		■			Yes		77	0804-Y30R		
Green 006	Satin	Yes		■			Yes		53	1060-G70Y		12E51
Green 009	Satin	Yes		■			Yes		45	1070-G30Y		
Green 012	Satin	Yes		■			Yes	Yes	22	3050-G		
Green 013	Satin	Yes		■			Yes		40	3010-B70G		
Green 014	Satin	Yes		■			Yes		33	2050-G20Y		
Green 015	Satin	Yes		■			Yes	Yes	11	6020-B909		
Grey 001	Satin	Yes		■			Yes		50	2500-N		81B19
Grey 004	Satin	Yes		■			Yes	Yes	10	7502-B	7015	
Grey 007	Satin	Yes		■			Yes		72	1002-Y	9020	
Grey 012	Satin	Yes		■			Yes	Yes	21	5502-B	7037	00A09
Grey 016	Satin	Yes		■			Yes	Yes	29	4502-R		
Grey 017	Satin	Yes		■			Yes		39	3500-N		
Grey 018	Satin	Yes		■			Yes		49	2502-B		
Grey 019	Satin	Yes		■			Yes	Yes	29	3000-N		
Grey 021	Satin	Yes		■			Yes	Yes	15	6502-B		
Grey 022	Satin	Yes		■			Yes		57	2005-G90Y		
Grey 023	Satin	Yes		■			Yes		38	3502-Y		
Grey 024	Satin	Yes		■			Yes		50	2500-N		
Grey 025	Satin	Yes		■			Yes		50	2502-R		
Grey 026	Satin	Yes		■			Yes		63	1502-B		
Grey 027	Satin	Yes		■			Yes		50	2500-N		
Grey 028	Satin	Yes		■			Yes		56	2002-Y		
Grey 029	Satin	Yes		■			Yes		57	2002-G50Y		
Grey 031	Satin	Yes		■			Yes	Yes	11	75000-N		
Grey 032	Satin	Yes		■			Yes	Yes	10	7502-B		
Grey 033	Gloss	Yes		■			Yes	Yes	50	2502-R		
Grey 034	Gloss	Yes		■			Yes	Yes	38	3502-Y		
Grey 035	Gloss	Yes		■			Yes	Yes	21	5502-B	7037	00A09
Grey 036	Gloss	Yes		■			Yes	Yes	10	7502-B	7015	
Orange 002	Satin	Yes		■			Yes	Yes	27	1070-Y70R		
Pink 003	Satin	Yes		■			Yes	Yes	24	2050-R20B		
Red 001	Satin	Yes		■			Yes	Yes	12	2070-R	3002	04E55
Red 003	Gloss	Yes		■			Yes	Yes	12	2070-R	3002	04E55
Red 004	Satin	Yes		■			Yes	Yes	14	2070-Y90R		
Terracotta 001	Satin	Yes		■			Yes	Yes	25	4020-Y70R		

Availability

Name	Texture	Postforming Grade	Standard Grade	Sizes Available	FSC Certified	Protective Foil	LRV	NCS (Nearest)	RAL (Nearest)	BS (Nearest)
				3050mm x 1300mm 3080mm x 1250mm 2510mm x 1250mm 3660mm x 1525mm						
Plain Colour										
White 001	Satin	Yes		■	■	■	Yes	81	0603-G40Y	9010 00E55
White 002	Gloss	Yes		■	■	■	Yes	Yes	86	0603-G40Y 9010 00E55
White 003	Matt	Yes		■			Yes	81	0603-G40Y	9010 00E55
White 004	Satin	Yes		■			Yes	82	0603-G80Y	9010 10A01
White 006	Satin	Yes		■			Yes	83	0502-G	9003 10A01
White 009	Satin	Yes		■			Yes	81	0505-R60B	
Yellow 004	Satin	Yes		■			Yes	61	1050-Y	
Solid Colour										
Black SC1	Satin		Yes	■			Yes	Yes	8	8000-N
Black SC2	Gloss		Yes	■			Yes	Yes	8	8000-N
White SC1	Satin		Yes	■			Yes	Yes	81	0505-R60B
White SC2	Satin		Yes	■			Yes	Yes	86	0500-N
White SC3	Gloss		Yes	■			Yes	Yes	81	0505-R60B
White SC4	Gloss		Yes	■			Yes	Yes	86	0500-N
Pure Finish										
Black PF1	Pure Finish		Yes	■			Yes	Yes	8	8000-N
Grey PF1	Pure Finish		Yes	■			Yes	Yes	57	2002-G50Y
Grey PF2	Pure Finish		Yes	■			Yes	Yes	29	4502-R
Grey PF3	Pure Finish		Yes	■			Yes	Yes	19	6005-G80Y
Grey PF4	Pure Finish		Yes	■			Yes	Yes	15	7000-N
White PF1	Pure Finish		Yes	■			Yes	Yes	90	0300-N
White PF2	Pure Finish		Yes	■			Yes	Yes	73	1002-R50B



| Altofina Oak 011 specified for the feature wall.

Availability

Name	Texture	Postforming Grade	Standard Grade	Sizes Available		FSC Certified	Protective Foil
				3050mm x 1300mm	3080mm x 1250mm		
Wood							
Ash 003	Satin	Yes		■		Yes	
Birch 001	Satin	Yes		■		Yes	
Beech 004	Satin	Yes		■		Yes	
Cherry 005	Satin	Yes		■		Yes	
Maple 002	Satin	Yes		■		Yes	
Oak 005	Satin	Yes		■		Yes	
Oak 007	Satin	Yes		■		Yes	
Oak 009	Satin	Yes		■		Yes	
Oak 010	Satin	Yes		■		Yes	
Oak 011	Satin	Yes		■		Yes	
Oak 012	Str 2	Yes		■		Yes	
Oak 013	Satin	Yes		■		Yes	
Oak 014	Str 2	Yes		■		Yes	
Oak 015	Satin	Yes		■		Yes	
Oak 016	Satin	Yes		■		Yes	
Oak 017	Satin	Yes		■		Yes	
Plum 002	Gloss	Yes			■	Yes	Yes
Striped Woodmix 001	Satin	Yes			■	Yes	Yes
Walnut 011	Satin	Yes		■		Yes	
Walnut 013	Satin	Yes			■	Yes	
Zebrano 004	Satin	Yes		■		Yes	
Zebrano 005	Satin	Yes		■		Yes	
Stone							
Concrete 002	Stone	Yes			■	Yes	
Concrete 003	Str 2	Yes		■		Yes	
Concrete 006	Satin	Yes		■		Yes	
Concrete 007	Satin	Yes		■		Yes	
Marble 001	Gloss	Yes		■		Yes	Yes
Marble 002	Matt	Yes		■		Yes	
Marble 003	Matt	Yes		■		Yes	
Marble 004	Satin	Yes		■		Yes	
Marble 005	Matt	Yes		■		Yes	
Stone 001	Satin	Yes		■		Yes	
Stone 002	Stone	Yes		■		Yes	
Metal							
Aluminium 001	Brushed		Yes		■	Yes	Yes
Aluminium 002	Polished		Yes		■	Yes	Yes
Bronze 001	Brushed		Yes		■	Yes	Yes
Brushed Metal 001	Satin	Yes		■		Yes	
Brushed Metal 002	Satin	Yes		■		Yes	
Brushed Metal 003	Satin	Yes		■		Yes	Yes
Copper 001	Brushed		Yes		■	Yes	Yes
Gold 001	Brushed		Yes		■	Yes	Yes
Gold 002	Polished		Yes		■	Yes	Yes
Pewter 001	Polished		Yes		■	Yes	Yes
Steel 001	Brushed		Yes		■	Yes	Yes

Protective Foil

Protective foil is added to all of the darker and gloss décors within the range. When the fabricator is creating curves with the heat related postforming technique, it is advisable to remove this foil from the area being heat treated.

LRV value

All plain colours have a Light Reflectance Value (LRV). This is the amount of visible light that a colour will reflect.

NCS, RAL and BS Colours

All plain colours have a nearest corresponding NCS number. Many of them have also been matched to the nearest RAL and BS numbers.

Gloss Surfaces

Gloss surfaces are more prone to scuffs and scratches than other finishes, so additional care should be taken.

Sample Service

We can send you larger laminate samples of all of the décors you are interested in.

High resolution décor images with 1:1 close up views and 1:20 full sheet views of each décor can be seen and downloaded from our website.

Please contact us to order samples:

Tel: 0121 561 4245

Email: sales@altofina.co.uk

Distribution Partner

Blackheath Products Ltd distributes Altofina laminates throughout the UK and Ireland.

Please contact Blackheath Products Ltd at:

Units 1-4 Fairfield Park

Halesowen

West Midlands

B62 9JL

Tel: 0121 561 4245

Email: sales@blackheathproducts.co.uk

www.blackheathproducts.co.uk



altofina.co.uk

